

HOW TO WEAR YOUR MASK PROPERLY



DO wear your mask above your nose and below your chin



DO NOT wear your mask below your nose

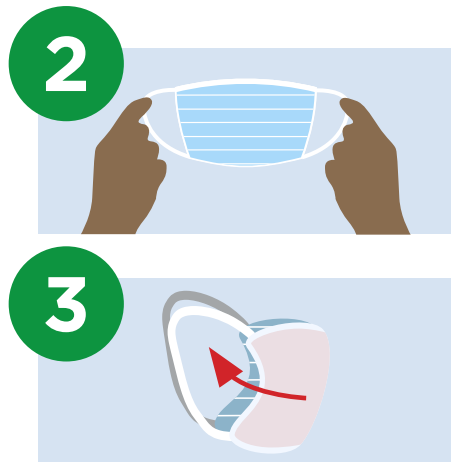


DO NOT wear your mask below your chin

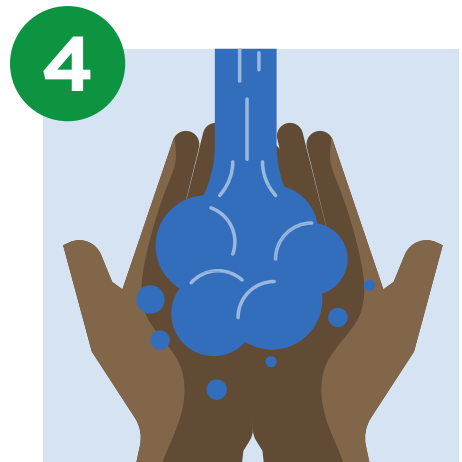
HOW TO REMOVE YOUR MASK PROPERLY



1 Carefully stretch the ear loops up and slide off over your ears



2 Handling only by the ear loops, fold the mask so that the outside is now facing in



4 Wash or sanitize your hands after removing your mask