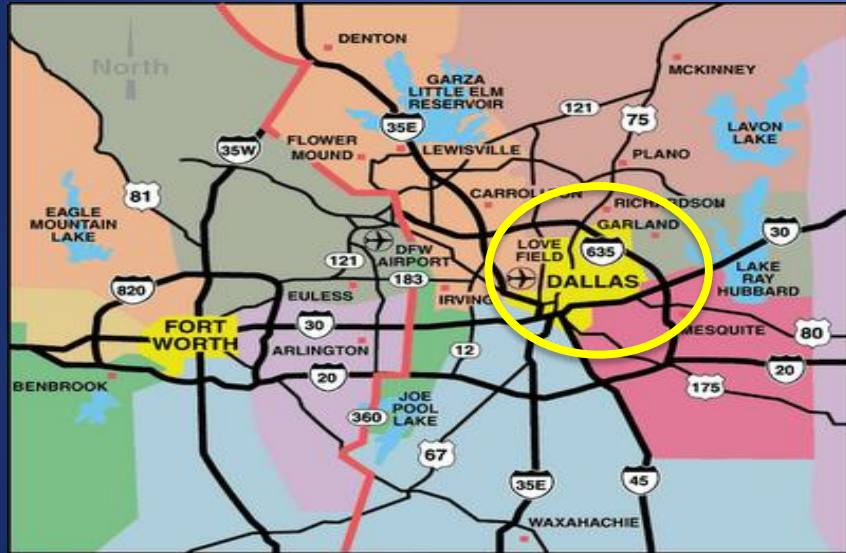


# Methodist Dallas GI Fellowship



# Dallas is a great place to live!





# Nearby Attractions

- Arts District
- Museums/Zoo
- Klyde Warren Park
- Dallas Arboretum
- All major sports
- Parks and Lakes
- Fort Worth
- Shopping/Restaurants



# Dallas Neighborhoods

- **Oak Cliff**
  - Home of Methodist
  - Bishop Arts District offers many unique restaurants and stores
  - Trinity Groves
- **Uptown/Oak Lawn**
  - Epicenter of urban life for young professionals
  - Katy Trail
  - Many fellows live here
- **East Dallas**
  - Many faculty live here
  - Deep Ellum
  - White Rock Lake



# Fellowship

# Overview

- Methodist Dallas is a 585 bed tertiary teaching center with Level 1 trauma center
  - Flagship hospital of Methodist Health System
  - Multiple residency and fellowship programs
- Currently 6 fellows, 2 per year

# Methodist Digestive Institute

- Multidisciplinary approach to digestive issues
- Tertiary referral center for Pancreaticobiliary and Liver Diseases
  - More than 5,500 endoscopic procedures and 60 liver transplants are performed per year
  - Accredited Center of Excellence for Pancreas Surgery and Pancreatic Cancer
- Actively recruiting faculty for esophageal disease and IBD
- Expanding number of advanced endoscopy procedures
  - Endoscopic cystgastrostomy, POEM, TIF, endoscopic suturing, endo-bariatrics

# Key GI Faculty



Paul Tarnasky, MD (Program Director)

- **Medical School** University of Washington School of Medicine
- **Residency** University of California at Los Angeles Medical Center
- **Fellowship** Duke University Medical Center
- **Adv. Fellowship** Medical University of South Carolina



Armond Schwartz, MD

- **Medical School** University of Texas Health Science Center at Dallas
- **Residency** Parkland Health & Hospital System
- **Fellowship** University of California Los Angeles



# Key GI Faculty



Prashant Kedia, MD

- **Medical School** University of Chicago
- **Residency** University of Pennsylvania
- **Fellowship** Weill Cornell Medical Center
- **Adv. Fellowship** Icahn School of Medicine at Mount Sinai



Jeff Linder, MD

- **Medical School** University of Texas Health Science Center at Houston
- **Residency** University of Texas Health Science Center at Houston
- **Fellowship** University of Alabama School of Medicine
- **Adv. Fellowship** St. Luke's Medical Center (Milwaukee)

# Liver Institute Faculty



Parvez Mantry, MD  
(Assistant Program Director)



Jeff Weinstein, MD



Maisha Barnes, MD



Hector Nazario, MD



Adil Habib, MD



Mangesh Pagadala, MD



Zahid Vahora, MD



Ashwini Mehta, DO

# Current Fellows



Rucha Shah, MD

Med. School: Chicago Medical School

Residency: Rush



Cassandra Craig, MD

Med. School: Uniformed Services

Residency: Keesler



Bryce Bushe, MD

Med. School: Texas Tech Health Sciences

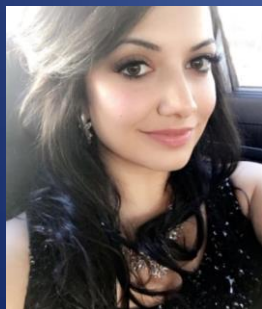
Residency: Texas A&M, Baylor Scott and White



Elizabeth John, MD

Med. School: UCF College of Medicine

Residency: Rutgers University Robert Wood Johnson



Rabia Akhtar, MD

Med. School: Washington University in St. Louis

Residency: UTSW



Shruti Patel, MD

Med. School: University of Nevada SOM

Residency: UC Davis Med Center

# Job Placement of Graduated Fellows



# Curriculum

## Year 1

4 Months GI Consults  
3 Months Hepatology  
1 Month Intro to Endoscopy  
1 Month Pathology and Radiology  
1 Month Ambulatory  
1 Month Elective  
1 Month General Endoscopy

## Year 2

6 Months Research  
2 Months GI Consults  
1 Month Hepatology  
1 Month Ambulatory  
1 Month Elective  
1 Month Advanced Endoscopy

## Year 3

4 Months Advanced Endoscopy  
2 Months GI Consults  
2 Months Elective  
2 Months General Endoscopy  
1 Month Ambulatory  
1 Month Hepatology

## Available Rotations/Electives

- Methodist Charlton – consults or general endoscopy
- Dallas VA – consults or general endoscopy
- Baylor University Medical Center--IBD, Motility/Esophageal
- Hepatology
- Surgery –Transplant, Colorectal, HBP
- Outside –Children's, Externships



# Call System

- Shared equally between all fellows
  - Seven days at a time, Q6 Week
  - Friday to Friday
- Responsibilities
  - Emergencies/hospital calls overnight
  - Cover General and Biliary services
  - Rounding and new consults during weekends and holidays
  - First year fellows cover major holidays and major GI conferences

# Didactics

## TUESDAY:

- 8:00 (Monthly): Surgery/GI Conference, Research conference
- 12:00 (Weekly): Board Review, Journal Club
- 1:00 (Weekly): Continuity Clinic at Golden Cross

## WEDNESDAY:

- 7:00 (Weekly): Case Conference (joint lecture)
- 12:00 (Weekly): Guideline review

Other conferences: Liver path, Tumor boards, “GI Giants” series

# Research Opportunities

- Active clinical research in single and multi-center trials
  - GI: DAPP, POEM, ESG, VLE, clinical registries
  - HEPATOLOGY: multiple drug clinical trials, ELAD
  - Multiple fellow-driven projects
    - DAPP, Screening colonoscopy, NASH, colon prep, SOD score
- Numerous publications, poster presentations, oral presentations at national and international meetings
- Book chapters/reviews

# The GI Lab

- 4 general rooms
- 2 dedicated advanced rooms
- Anesthesia support
- On call tech/nurse for after hours cases

BENEFITS



# Benefits

## Stipend

- PGY 4: \$ 64,155.62

## Vacation

- 15 weekdays of vacation per year + DHAT holidays
- Total of 20 days; may be taken individually

## Leave

- 10 days sick leave
- Maternity/paternity leave

# Educational Support

- Practical Gastrointestinal Endoscopy, Sleisenger and Fordtran, DDSEP9, access to Steinberg Board review provided at entry
- \$300 annual book allowance
- Membership fees for ACG, AGA, ASGE, TSGE
- Travel/lodging for 1<sup>st</sup> year fellows course
- Registration/travel/lodging expenses to ACG or DDW(\$2000)
  - Additional funding (\$2500) if presenting at other meetings
- BLS/ACLS at Methodist
- CME funds

# Insurance Benefits

- Health insurance for physician AND immediate family (spouse and children)
- \$2,000 annual flexible spending account
- Optional dependent care FSA
- Optional dental and vision insurance for fellows and eligible family members
- Professional liability coverage and group life insurance starting 1<sup>st</sup> year
- Disability insurance starting in 2<sup>nd</sup> year (or after 12 months of employment)

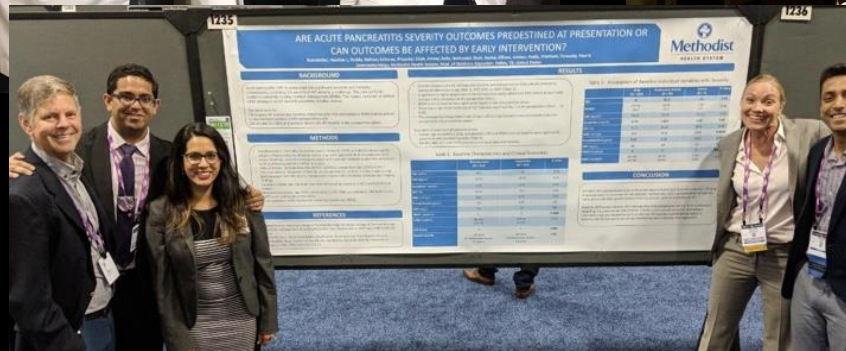
# Other Benefits

- \$400 allowance for smart phone/tablet during the first year
- Lunch at on-site noon conferences
- Social functions – team-building, holiday party, graduation dinner
- Fitness Center – free access to the Folsom Center
- Scrubs/Lab coats
- Free covered parking

# Why I came here...

- Growing multidisciplinary Digestive Institute
  - National expertise in pancreaticobiliary disease
  - Liver transplant program
  - Exposure to innovations and leaders in GI
- Ability to tailor rotations to interests/goals
- Ample opportunities for scholarly activity
- Great work-life balance
- Excellent fellow camaraderie!!!!











The image features a dark gray background with three overlapping circles in shades of blue. A horizontal white banner is positioned across the middle of the circles. The word "WELCOME!" is written in a dark blue, sans-serif font on the banner.

WELCOME!