

Fall 2022

**IN THIS ISSUE****Built for Success**

EDs expanding in Richardson, Southlake
Midlothian debuts its new cath lab

Singing our Praises

Methodist tops DCEO finalist list
Young Healthcare Executive of the Year

Epic Strides

See what's new in the latest upgrade

Progress Notes

METHODIST HEALTH SYSTEM MEDICAL STAFF NEWS



High Reliability and Pharmacy initiatives are putting patients 1st



Martin L. Koonsman,
MD, FACS, CPE
Chief Medical Officer

As physicians, we value protecting patients from harm just as highly as treating their afflictions – and this year Methodist Health System will make patient safety a major focus with our journey to High Reliability and "zero preventable harm."

This education initiative – titled RISE for Reliability, Innovation, Safety, and Excellence, and coordinated by our Quality and Safety staff – began in earnest this summer with four two-hour training sessions provided to all managers and above. Similar training will be provided to all staff members in the coming months, in collaboration with our partners at Press Ganey.

By next year, I hope all of MHS, employees and members of the medical staff alike, will RISE to this challenge to improve patient and workplace safety.

Another initiative that illustrates our exceptional progress this year involves our Pharmacy staff and the boundless potential of Medication Therapy Management. This innovative program allows a hospital pharmacist to personally promote adherence to drug therapy, whether it's managing diabetes, high blood pressure, or cholesterol – all problems suffered disproportionately by the communities Methodist serves.

We are significantly expanding our MTM programs and have seen phenomenal early results. These programs give countless patients another trusted provider in their corner who's far more invested in their care than a retail pharmacist at the corner drugstore might be.

Here are a few additional highlights you can read more about below:

- Emergency departments at Methodist Richardson and Methodist Southlake are expanding to better serve patients.
- Cardiology service lines took major steps forward with a new unit on 6 Schenkel Tower at Methodist Dallas and a new cath lab at Methodist Midlothian.
- Methodist earned high praise from DCEO and the Dallas-Fort Worth Hospital Council.
- Our Epic software database got some notable upgrades this month.

Thanks again for taking the time to read about our progress as a system. We encourage you to **keep checking your MHD email**, both for good news like this and for critical system announcements. Keeping this line of communication open makes our system stronger.

Built for Success



Methodist Richardson Work begins on \$46 million ED expansion project

In August, Methodist Richardson broke ground on a \$46 million project that will expand the emergency department.

The project will remodel and add about 25,000 square feet of space for trauma treatment areas and 18 new beds to the existing emergency department, which sees about 55,000 visits each year.

It will also include 80,000 square feet to accommodate the hospital's new pharmacy and laboratory services.

Construction begin this fall, with an anticipated completion date in early 2024.



This is Methodist Richardson's third major expansion project since the 312-bed hospital opened in 2014.

"Over 50% of our admissions come through our emergency department, so it's essentially the front door of our hospital," said Methodist Richardson President **Ken Hutchenrider**, FACHE. "We are growing to allow our ED to more effectively serve our growing region."



Methodist Southlake

Growing ED signals more to come in Tarrant County

Methodist Southlake officially cut the ribbon on its expanded emergency department on September 14, and the new facility is now welcoming patients.

The expanded ED advances Methodist Southlake's journey to become a full-service, acute-care hospital, following its addition to Methodist Health System as a wholly owned facility in June 2021. The upgraded space will give patients access to new capabilities, including nuclear medicine, a resuscitation bay, critical care telemedicine consultations, and enhanced cardiac monitoring. It also offers patients a close-to-home option for treating abdominal pain, orthopedic injuries, gynecological conditions, chest pain, infections, and trauma injuries.

"We've built an amazing team for our patients throughout the organization, whether it be in the emergency room, the ICU, surgical services, or anywhere in between. The Methodist Southlake team is committed to our mission to improve and save lives through compassionate quality healthcare," says Methodist Southlake President **Benson Chacko**, FACHE.

Methodist Southlake now enters Phase 2 of construction plans to renovate the existing space. The entire ED is expected to open in January 2023.

Methodist Midlothian

Expanding cardiac care to Ellis County residents

Methodist Midlothian recently completed a \$5 million expansion project to add a cardiac catheterization lab. Community leaders and hospital staff celebrated the new facility with an open house and dedication ceremony.

The project features state-of-the-art equipment, hybrid interventional lab resources, and the most advanced technology for diagnosis and treatment of heart disease.

“The cath lab will greatly enhance our ability to diagnose and treat a wide range of cardiac conditions,” Methodist Midlothian President **Jary Ganske** says. “The expansion will help meet the ever-growing need for care in Ellis County and provide additional resources for our hospital team and cardiologists on the medical staff.”

The cath lab team treated its first patient in August. Read more about him on [Shine Online](#).



“It is critical to have a catheterization lab in close proximity to a patient,” says **Roberto Wayhs**, MD, interventional cardiologist on the medical staff at Methodist Midlothian.

Methodist Dallas

New cardiology unit opens for patients, medical staff

Methodist Dallas recently renovated 6 Schenkel Tower, allowing staff to continue providing superior care to patients. The newly renovated floor, which officially opened June 15, primarily serves as a temporary home for cardiology patients.

“The medical staff makes this unit successful. We have huge plans for the cardiology team, and this new floor is the first step to reach our longtime goals,” says **Nasser Khan**, MD, FACC, FSCAI, Medical Director of the Structural Heart Program at Methodist Dallas.

Dr. Khan and **Manavjot (Mj) Sidhu**, MD, Medical Director of Cardiology at Methodist Dallas, joined the administrative team and the Methodist Health System Foundation to celebrate the upgraded unit with a ribbon-cutting and blessing ceremony.

Methodist Mansfield

Neuro and trauma critical care services expand

To support its journey to becoming a Comprehensive Stroke Center and Level II Trauma Facility, Methodist Mansfield is opening a new eight-bed Neuro Trauma ICU this year.

Richard Meyrat, MD, Director of Neurosurgery and founding member of the Methodist Moody Brain and Spine Institute; Nurse Manager **Rachel Cochran**, BSN, CCRN; and Nurse Director **Brooks Williams**, MSN, CENP, are leading the program.

This new project is a testament to the hospital's dedication to providing exceptional care to patients with neurological and neurosurgical emergencies.



Excellence in Healthcare Awards 2022

Recognizing outstanding industry leaders and healthcare innovation in Dallas-Fort Worth.

FINALISTS ANNOUNCED



Methodist boasts 9 DCEO award finalists

Methodist Health System came out on top as *DCEO* announced the finalists for its 2022 Excellence in Healthcare Awards. With nine finalists, Methodist had the most of any health system.

Our nominees are among the top picks for seven categories, including outstanding health system. President and Chief Operating Officer **Pam Stoyanoff**, MBA, CPA, FACHE, is a finalist for outstanding hospital executive.

Other nominees include **Crystee Cooper**, DHEd, MPH, CLSSBB, CRA®, VP Clinical Research Institute and the Center for Simulation and Wellness; **Karen Roush**, MD, MBA, Vice Chair of Pathology; and volunteers Janice Fannin and Cindy Merren.

Methodist Richardson received a nomination for achievement in community outreach, and both Methodist Mansfield and Methodist Charlton are nominated for outstanding medical real estate projects.

"I am exceedingly proud to see the many deserving names on the list of finalists this year," Chief Executive Officer **Jim Scoggin** says. "This is a fitting tribute not only to the outstanding nominees from the Methodist Health System but also indicative of the great work and contributions by so many across the entire system every day. The Methodist Family is rooting for all of our nominees!"

You may find the full list of award finalists on the [D Magazine website](#).



Methodist Charlton

Young Healthcare Executive of Year

The Dallas-Fort Worth Hospital Council named **Patrick Brown**, FACHE, VP of Operations at Methodist Charlton as its Young Healthcare Executive of the Year.

"This recognition honors youthful professionals who display the impressive abilities of future North Texas leaders," according to the hospital council.

Brown will officially accept the prestigious award during the council's 74th Awards Luncheon on October 21 at the Irving Convention Center.



Methodist Charlton

New physician liaison joins team

Amy Callahan, BSN, RN, recently joined Methodist Charlton as the physician development director, filling a position that has been vacant for several months. She previously worked as a cardiology manager at Methodist Mansfield.

Callahan is tasked with establishing and cultivating positive relationships between physicians on the medical staff and their associated staff members.

"I love that Methodist Charlton is very much a community hospital," Callahan says. "I am hoping to fully immerse myself in the community and soak up all it has to offer. I hope to build relationships with physicians and be a source of knowledge for physician affairs. I am very excited to be here and meet everyone."



Methodist Southlake

New chief nursing officer takes reins

Methodist Southlake welcomed VP of Nursing and Chief Nursing Officer **Kathryn Ufolla**, MHA, BSN, RN, CCRN, to its leadership team this summer.

Ufolla is a familiar face within Methodist Health System, previously serving as the director of nursing for critical care services at Methodist Charlton. She first joined the health system in 2008 when she started at Methodist Dallas, working in the critical care unit.

After a brief departure, she returned to Methodist in 2013 and has served as a staff nurse, nursing clinical coordinator, and manager in the ICU.

Methodist Mansfield

Recognizing model leaders

Nine physicians on the medical staff at Methodist Mansfield were recognized at the general staff meeting on September 7 for their extraordinary patient care.

Among them, Medical Staff President **Samir Nangia**, MD, was lauded for his outstanding leadership during the 2020-2022 term, and Trauma Medical Director **Gary Alexander**, MD, received recognition for helping the hospital achieve its status as an Advanced Level III Trauma Facility. **Shantala Samart**, MD, will serve as the new medical staff president for 2022-2024, and **Jennifer Coffman**, MD, will be her successor.



Research and Education

Methodist Charlton and Methodist Dallas

Experts discuss sepsis at DFW Hospital Council conference



Methodist Charlton and Methodist Dallas helped the Dallas-Fort Worth Hospital Council (DFWHC) hold its first in-person conference since 2020 on August 31.

More than 100 people attended the conference in Hitt Auditorium, including staff from Methodist Charlton, Methodist Dallas, Methodist Midlothian, and other local hospitals.

Methodist Dallas Chief Medical Officer **Leslie Cler**, MD, FACP, CPE, was the keynote speaker. In the hospital's Hitt Auditorium, he explained the benefits of maintaining a system-wide sepsis committee to develop a plan with actionable items.

"In order to focus on caring for individuals with sepsis, we must collaborate with their entire care team, work off of an established definition of sepsis, and follow new guidelines as they are released," Dr. Cler says.

Methodist Charlton clinical outcomes coordinator **Susan Baty**, RN, BSN, serves as co-chair of the DFWHC's Sepsis Strike Force Collaborative and was part of the planning committee that brought the event to Methodist.

"Sepsis can be deadly for any patient, and we want to work together by identifying sepsis early and begin care immediately," Baty says.



Read the latest *Digest*, from the Methodist Digestive Institute

Click the image below to read the latest newsletter, highlighting innovations in care for pancreatic cancer, bariatrics, and esophageal care.

DIGEST

Methodist Digestive Institute Newsletter • Volume 5, Issue 1 • Fall 2022

Methodist Digestive Institute

Methodist Digestive Institute at Methodist Dallas Medical Center is a national leader in digestive healthcare. We can treat a range of conditions and diseases. Learn more about how we can help you.

MethodistHealthSystem.org

The physicians mentioned in this publication are independent practitioners who are members of the medical staff at Methodist Health System. Texas law prohibits hospitals from practicing medicine. The physicians on the Methodist Health System medical staff are independent practitioners who are not employees or agents of Methodist Health System or any of its affiliated hospitals. 806970143 MHS MDI 092022C

Methodist Digestive Institute
Methodist Dallas Medical Center
1441 N. Beckley Ave., Dallas, TX 75203
214-933-6601 (T) 214-947-1925 (F)
digestivehealth@mhd.com
MethodistHealthSystem.org/MDI



Lo Welch, writer/editor
Outreach and Marketing Manager
Methodist Digestive Institute
laurenwelch@mhd.com

Equipped to Care

Methodist Dallas

Methodist becomes first in North Texas to offer new prostate cancer treatment

A West Texas rancher who has battled prostate cancer for more than a decade traveled 440 miles to Methodist Dallas for a newly approved drug — the first treatment of its kind in North Texas and only the third statewide.

“Methodist Dallas being the first medical institution to offer this therapy in North Texas is testament to our commitment to providing cutting-edge medical care to South Dallas, North Texas, and beyond,” says **Alexandru Bageac**, MD, Department Chair of Radiology at Methodist Dallas.

Diagnosed with prostate cancer 16 years ago, 73-year-old Don Deaton had his first round of Pluvicto administered on August 16. The drug is a treatment specifically tailored to patients with progressive, metastatic prostate cancer whose options beyond chemotherapy are limited.

This treatment, approved in March by the FDA, could potentially improve survival rates among patients with a specific form of prostate cancer.



[READ MORE](#)

Medical Milestones

Medical Milestones

Methodist Midlothian

Maternal care team earns hospital its first designation

Thanks to the hard work of Methodist Midlothian's Women and Children's Services team, the hospital has earned its first designation — as a Level I Maternal Facility for Perinatal Care.

The designation demonstrates the team's dedication to patient care, continuing education, and achieving a high level of skills.

"We are extremely proud of the leadership in the unit that pushed us to earn the designation and advocate for maternal system development," says **Jeremy Taylor**, MHA, BSN, RN, TCRN, CNO and VP of Nursing. "It's a true testament to the high standards that our medical team strives toward when caring for each patient and child."



Methodist Richardson

Now a Level III Trauma Center

Methodist Richardson has earned its designation as a Level III Trauma Center from the Texas EMS Trauma & Acute Care Foundation (TETAF).

TETAF awarded Methodist Richardson this recognition after an on-site survey in June confirmed that the hospital is providing optimal trauma care and 24-hour immediate coverage by emergency physicians and surgeons.

"Achieving Level III Trauma status is a reflection of our commitment to ensure that the people of the communities we serve are receiving advanced, high-quality emergency care," says Methodist Richardson President **Ken Hutchenrider**, FACHE.

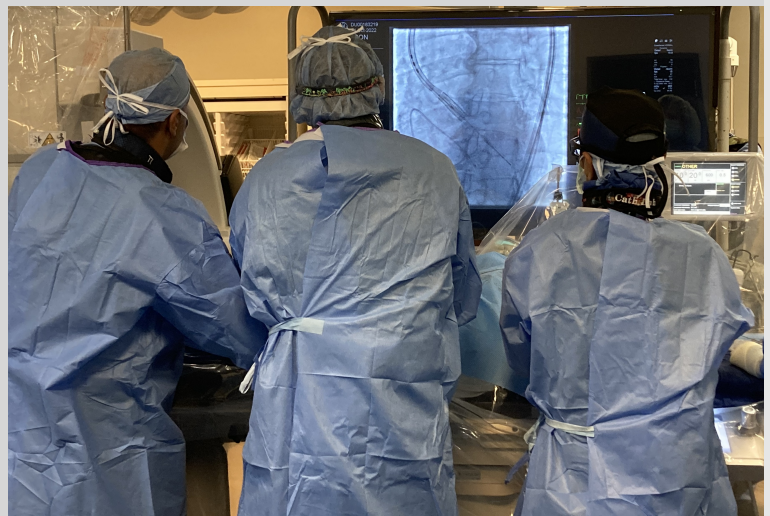
Methodist Dallas

Closing in on their 200th TAVR

The cardiology team at Methodist Dallas Medical Center will mark an important milestone this month with its 200th TAVR procedure.

A transcatheter aortic valve replacement (TAVR) is a popular option for patients whose age or medical history make their risk too high for open-heart surgery. Additionally, the recovery process following a TAVR is much shorter and easier on the patient.

"In this multidisciplinary approach, teamwork is key," says **Tim Issac**, MD, interventional cardiologist on the medical staff at Methodist Dallas. "With so many TAVRs under our belt, we are now able to tackle more complicated patients."





Methodist Richardson Team sets record 597 surgeries in August

August was a busy month in the Methodist Richardson OR. The Surgical Services team set a record with 597 procedures, including 108 robotic cases.

This is an extraordinary achievement considering December is usually the busiest month of the year as patients try to take advantage of their insurance policies.

“Our OR team worked together to make all of these cases happen,” says Surgical Services Director **Cheryl Koch**, RN, MSN, NEA-BC. “That included weekends and after-hours.”



Methodist Dallas Colon cancer team earns accreditation

Methodist Dallas is one of the only hospitals in North Texas to complete the National Accreditation Program for Rectal Cancer (NAPRC).

Staff and leadership worked for years to earn this accreditation and met NAPRC's high standards for program management, clinical services, and quality improvements for patients. As expected of all accredited programs, the hospital has a rectal cancer team that includes clinical representatives from surgery, pathology, radiology, radiation oncology, and medical oncology.

“We are very proud of our team,” says **Anand Lodha**, MD, colorectal surgeon on the medical staff at Methodist Dallas. “This recognition reflects our commitment towards excellence in managing rectal cancer.”



Methodist Southlake Celebrating a year full of accomplishments

Methodist Southlake celebrated its first anniversary of joining the health system as a wholly owned hospital June 1.

During its first year, not only did Methodist Southlake build a cardiology program from the ground up and complete 59 cardiac cath procedures, it also broke ground on its ED expansion project and accepted over 100 transfers into the hospital.

“The word is getting out to our community members that we are available to meet their needs and they can trust Methodist,” says **Benson Chacko**, FACHE, President of Methodist Southlake. “Soon, we will no longer be the best kept secret on Highway 114.”

Staff reminisced over photos of major milestones and events that the hospital achieved during that first year. They enjoyed cake pops and received branded gifts to represent the growing team.

Epic Strides

Epic Upgrade went live October 16: What providers should know

It's that time again! Please take a few minutes to see what's coming with our newest upgrade. You can expect to see these changes starting on October 16.

Click the links below to explore information specific to your specialty.

- [Inpatient](#)
- [Emergency](#)
- [OB-GYN](#)
- [Radiologist/Cardiologist](#)
- [Haiku](#)

Featured Upgrades

Results Review: Revamped

Results Review is significantly updated to make it easier to find the results you need without looking elsewhere in the chart.

The screenshot shows the 'Results Review' interface with several callouts highlighting new features:

- Results Review gets a new look and feel**: A red oval highlights the main results table.
- Most Recent Results column**: A red box highlights a column of results, with a callout indicating 'Most Recent'.
- Easy, intuitive search**: A red box highlights the search bar on the right side of the interface.
- Easily find pending labs**: A red box highlights the 'In Process' and 'Collected' sections on the right side of the interface.

Explore the [Results Review](#) tip sheet for more detailed information this activity.

Hey Epic! (Haiku/Canto)

The screenshot shows the 'Hey Epic!' interface with several callouts highlighting new features:

- Go ahead, I'm listening!**: A red box highlights the microphone icon at the bottom of the screen.
- Providers can ask Hey Epic! for information. Try it out.**: A red box highlights the text 'Go ahead, I'm listening!'.
- You might say:**: A red box highlights the list of example queries: "Show me the latest Lipid panel.", "Show me the last note.", and "What medications are they on?".
- Swipe up from bottom**: A red arrow points to the bottom of the screen, indicating the swipe gesture.

Refer to the [Hey Epic!](#) tip sheet for more information.

Improved Status Board for Surgeons

The redesigned Status Board makes it easier to find what you're looking for, quickly switch between favorite reports, check the icon legend, and review statuses color-coded to their location.

Status Board: Perioperative Today's Schedule [9700] (Fri 4/15/2022)

Schedule

Open Case

Cancel

Settings

Refresh

Hide Headers

Visit Guide

Legend

Perioperative Today's Sch...

Anesthesia OR Cases

Search Status Board

4/15/2022

4/15/2022

Add-Do	NLate/Inf	Iso	Sam	Travi	Prot/Patient	Age	Patie	Date of Birth	Int/Lang	Bed	Room	Times	Length	Procedures/ Visit Type	Providers	Anesthesia Staff	AnesASA	Bed
						53 yrs	M						0	Knee Replacement - Left	Zimmer, Md	A. Anesthesiologist, MD	Gen	
						8 yrs	F			OR 11			120	Cholecystoenterostomy	Kadit, Md		Gen	
						63 yrs	M			OR 10			130	Resection, Small Intestine, Open - Bilateral	Taylor, Md		Gen	
						26 yrs	M			OR 10			45	Creation, Bypass, Arterial, Axillary, From One To Other, Using Graft	Pinderski, Md		Gen	
						35 yrs	M			OR 11			75	Appendectomy, Open	Burns, Md		Gen	
						56 yrs	M			OR 10			225	Abdominoplasty - Left	Taylor, Md		Gen	
						89 yrs	F			OR 11			76	Resection, Colon, Low Anterior, Laparoscopy-Assisted	Kadit, Md		Gen	
						78 yrs	F		No/English	EMH TEE	1130		120	Transesophageal Echo (Tee)	Pinderski, Md		Gen	
						56 yrs	F			EMH PACU	1345		15	Recovery	Pinderski, Md		Gen	
						6 yrs	M			OR 02			75	Appendectomy, Open	Zimmer, Md	A. Anesthesiologist, MD	Gen	
						40 yrs	M		No/English	OR 02			120	Appendectomy, Laparoscopic	Burns, Md		Gen	
						24 yrs	M		No/English	OR 02	1543 1603		20	Reattachment, Tongue, Open	Taylor, Md		Gen	

Add-on

Latex?

Anes Type

Iso

Inf

In Fac

Appt Comp

Pre Proc

Proc

Recov

Phase II

Complete

Scheduled

Canceled

Appt Sch

Appt Arrived

Learn more about Status Board updates [here](#).

More Accurate Postpartum Hemorrhage Risk Scores

The Postpartum Hemorrhage Risk scoring system more accurately calculates risk with the following updates to match Version 1.2 of AWHONN's system:

- A severe postpartum hemorrhage in the past is counted as a high risk factor
- Pre-eclampsia or HELLP Syndrome is counted as a medium risk factor
- History of fibroids or C-sections, or patients with low platelets, are more accurately identified
- No score is calculated for patients with certain L&D statuses that indicate they are not pregnant, such as Gynecology

Hemorrhage Risk

Time taken: 10/1/2021 1325 Responsible More

Show Row Info Show Last Filed Value Show Details Show All Choices

Risk Category: Admission

Prior Cesarean Birth or Prior Uterine Incision

☒ Prior cesarean birth ☐ Prior uterine incision ☐ No

Has the patient had a prior cesarean birth or uterine incision?

©The AWHONN Postpartum Hemorrhage (PPH) Project Risk Assessment Table Version 1.2.

Number of previous vaginal births?

1

How many previous vaginal births has the patient had?

©The AWHONN Postpartum Hemorrhage (PPH) Project Risk Assessment Table Version 1.2.

Multiple Births

☐ No ☒ Yes

Is the patient currently pregnant with multiples?

Known Bleeding Disorder or Coagulopathy

☐ Yes ☒ No

Does the patient have a known bleeding disorder or coagulopathy?

©The AWHONN Postpartum Hemorrhage (PPH) Project Risk Assessment Table Version 1.2.

History of Postpartum Hemorrhage

History of one postpartum hemorrhage (less than or equal to 1,500 mL or not requiring blood transfusion) taken 9/21/2021 1828 by Nurse ObstetricsId, RN

History of one postpartum hemorrhage (less than or equal to 1,500 mL or not requiring blood transfusion)

History of one severe postpartum hemorrhage (greater than 1,500 mL or blood transfusion)

History of multiple postpartum hemorrhage of any severity

No history of postpartum hemorrhage

Does the patient have a history of one or more PPH, or severe PPH (>1,500 mL or blood transfusion)?

©The AWHONN Postpartum Hemorrhage (PPH) Project Risk Assessment Table Version 1.2.

Epic Trainers are here, whenever there's a question — or suggestion

The Epic Training team is always available to answer your questions and provide guidance on how to use Epic more efficiently. We have a trainer posted at each campus to help with anything you may want to know about Epic, including taking your suggestions about how to improve clinical workflows in Epic for all physicians.

MDMC: 214-933-3742 (3-EPIC)
or EpicMDMC@mhd.com

MMMC: 682-242-3742 (2-EPIC)
or EpicMMMC@mhd.com

MRMC: 469-204-3742 (4-EPIC)
or EpicMRMC@mhd.com

MLMC: 469-846-3742 (6-EPIC)
or EpicMLMC@mhd.com

MCMC: 214-947-3742 (7-EPIC)
or EpicMCMC@mhd.com

MSMC: 682-335-3742
or EpicMSMC@mhd.com



Paul Lansdowne, MD
Executive Medical
Director
Physician Service
Excellence

Bedside manners

To connect with patients and staff, know your 'why'

As doctors, we're always trying to get people to do stuff. Maybe it's your kids and their chores. Or maybe it's at work: an insurance company, another care team member, or a patient.

Practicing Excellence founder [Stephen Beeson](#), MD, says that as leaders, all team engagements begin with how we interface with others. From the start, people need to feel valued, appreciated, and safe. They need to feel that they have a future where they are, that they have an opportunity to develop and the resources they need. He says these are the necessary conditions for being able to operate at work. To me, these sound pretty much like the necessary conditions to get up in the morning!

Leaders need to set these conditions for their healthcare teams and workers. As physicians, we need to set similar conditions for our patients. When we make them feel that we listen — when they feel valued, appreciated, and safe — we can have that genuine connection.

An environment where there is an authentic patient-centered culture has four times less burnout than others. Leaders need to connect and resonate with the value system of those that deliver care. As a leader, you want the clinicians you work with to ask themselves: What is it that I do for patients that allows them to walk out of here and say, "wow!"? As physicians, this is part of knowing your "why." As in, "Why did I go into medicine in the first place?" Or maybe this sounds more familiar: "Why do I even bother?"

Both questions are the same. One may sound corny and the other jaded. But these are questions worth asking ourselves, even our teams: What is our purpose here? Who do we aspire to be for each other and our patients?

Mayo Corner

MAYO CLINIC CARE NETWORK



Member

The Mayo Clinic Care Network is a unique collaboration that grants physicians on the medical staff at Methodist Health System special access to Mayo Clinic knowledge, expertise, and resources. Patients experience the confidence and convenience of being able to access world-leading medical expertise through their trusted local physician, close to home.

The Mayo Clinic Care Network Education Team continues to develop programming for 2022. Watch the [Care Network Exclusive Educational Opportunities](#) page for the most current listing of opportunities to virtually connect with colleagues throughout the network. Here's a look at upcoming webinars:

- **9:30 – 11 a.m. October 10 |**
[How to Make Difficult Group Decisions when Colleagues Disagree](#)
- **1 – 3 p.m. November 16 |**
[Fostering Resilience in the Workplace](#)
- Available at your convenience |
[Self-Guided Nurse Practitioner/Physician Assistant Preceptor Training Course](#)

Mayo Clinic also hosts a variety of educational conferences and events throughout the year:

- **October 31-November 2 |**
[Seventh Annual Epilepsy and EEG in Clinical Practice – Orlando and Livestream](#)
- **November 2-5 |** [17th Annual Mayo Clinic Hospital Medicine: Managing Complex Patients 2022 – Scottsdale, Arizona, and Livestream](#)
- **November 4-5 |** [31st Annual Mayo Clinic Symposium on Sports Medicine – Rochester, MN, and Livestream](#)
- [Updates in Palliative Care – Online Course](#)

If you have any questions, contact MCCNBrandAdmin@mayo.edu or email [Angela Vincent Michael](#), System Director of Performance Improvement.